

***H igh Water Flood Door
H orizontal
S wivel***



BL/HHS

 Item Nr.: **BL336**

H High Floodwater Door H horizontal S swivel

The flood door is designed for both, new buildings and facilities and it is suitable for retrofitting.

The system is comprised of a:

- a very robust and durable door leaf, supported by a heavy duty frame
- a peripheral to the free opening stainless steel frame construction, with a durable and adaptable UV-protected seal.

The door leaf is mounted on hinges. It easily closes and locks through a 3-point lever. The lever is mounted on the door.

Operation, opening and closing, is similar to a standard doors.

When closing the flood door, it presses against the frame gasket, whereby a seal is ensured. Regardless of side mounted, the systems can accommodate water pressure from both sides.

Frame material:

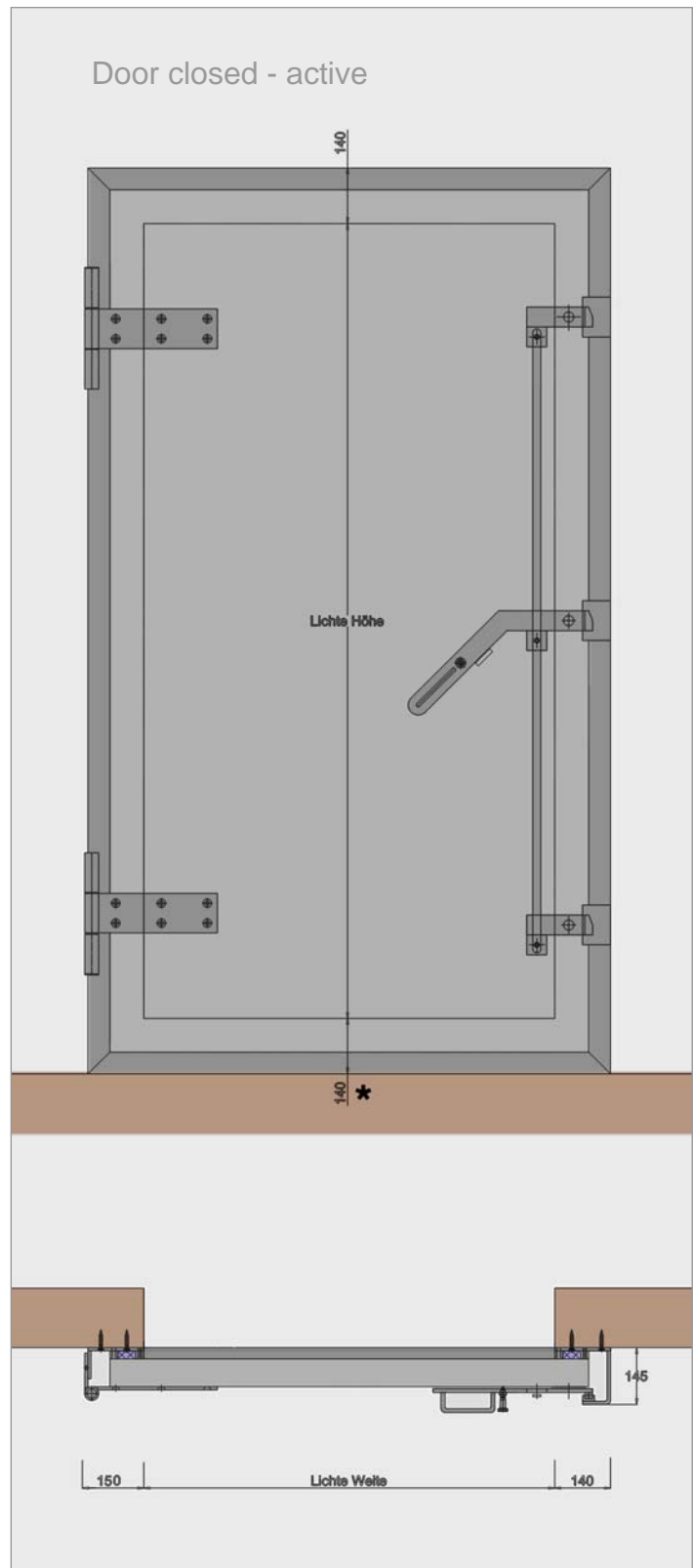
- Standard 1.4301
- Special design S235JR galvanized and powder coated

Door leaf material:

- Aluminum standard
- Special design Aluminum, powder coated to RAL spec. in RAL spec.

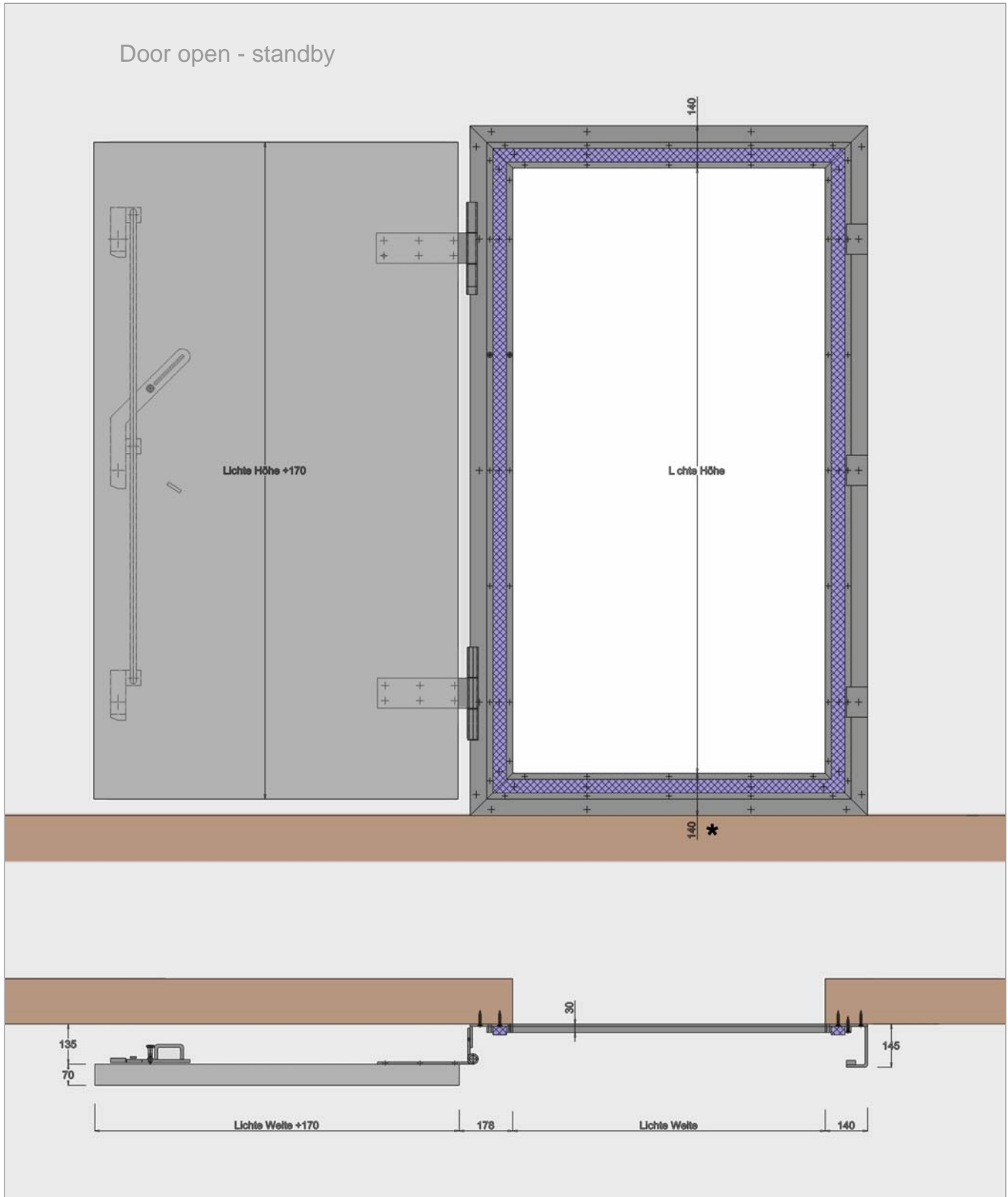
*

Floor angle standard height: 140mm
 Floor angle minimal height: 100mm



BL/HHS

Item Nr.: **BL336**

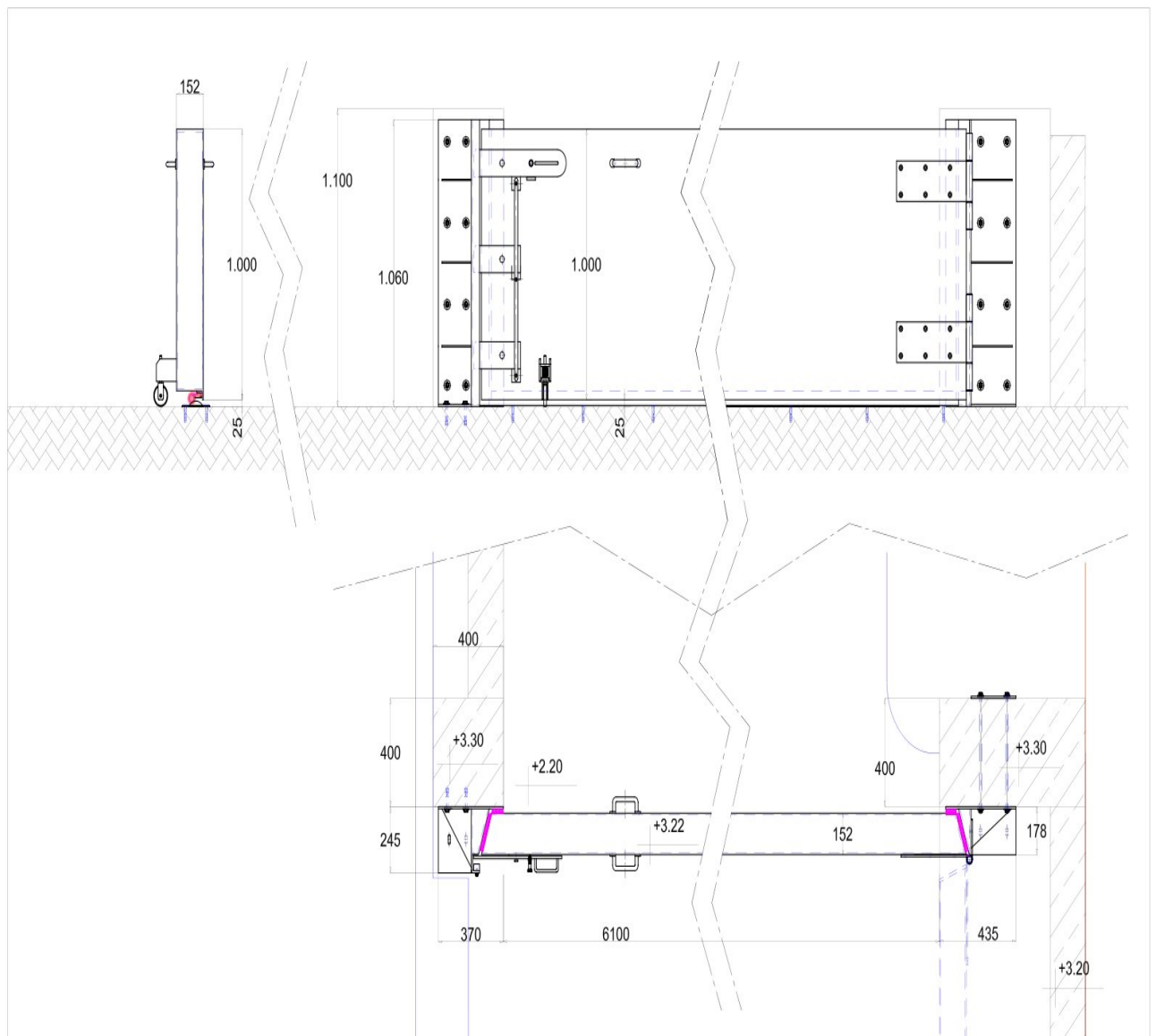


BL/HHS

ItemNo.:336

H High Floodwater Door
H horizontal
S swivel

Driveway installation:



Floor angle standard height: 50mm
 Floor angle minimal height: 30mm

BL/HHS

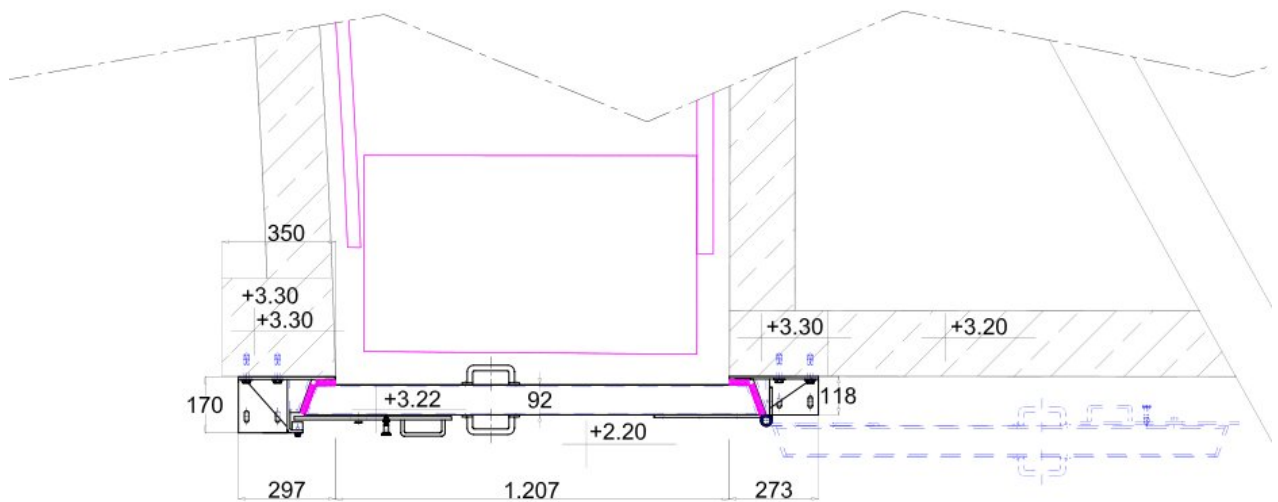
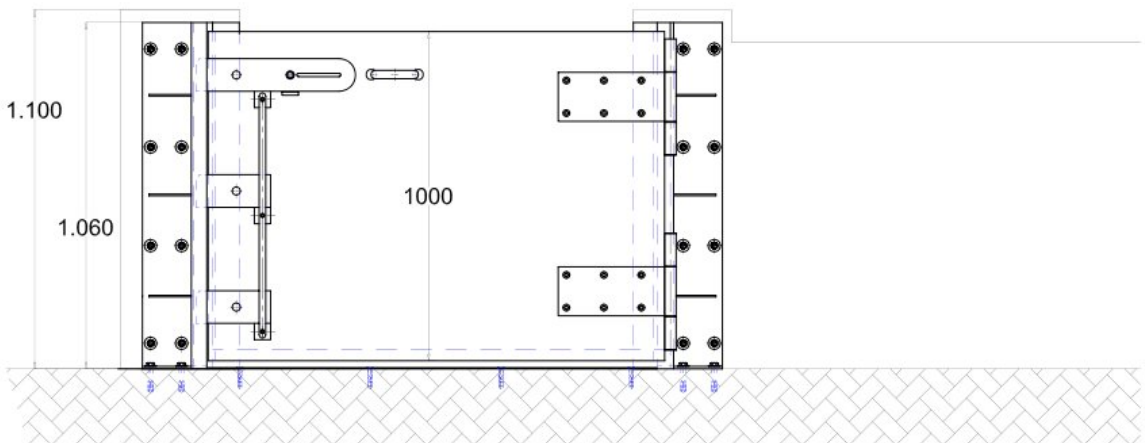
ItemNo.:336

H High Floodwater Door

H horizontal

S swivel

Mandoor installation:



Floor angle standard height: 50mm
 Floor angle minimal height: 30mm



Europe

Blobel Umwelttechnik GmbH

Ziegeleistraße 5
86368 Gersthofen, Germany

Telephone: +49 (0)821 498190-0
Telefax: +49 (0)821 498190-30

email: info@blobel.de
Web: www.blobel.de

North America / Canada

BLOBEL Environmental Engineering LLC

270 Presidential Drive
Wilmington, Delaware 19807, USA

Telephone: +1 302-353-1555
Telefax: +1 302-288-3753
Mobile: +1-215-666-2267

email: info@blobel.us
Web: www.blobel.com

Asia / Pacific / South America

Blobel Environmental Engineering

6/41 Belgrave Street
Sydney NSW 2024, Australia

Telephone: +61 (0)2/93 69 35 04
Mobile: +61 (0) 4 19 27 94 81

email: mail@blobel.com
Web: www.blobel.com